



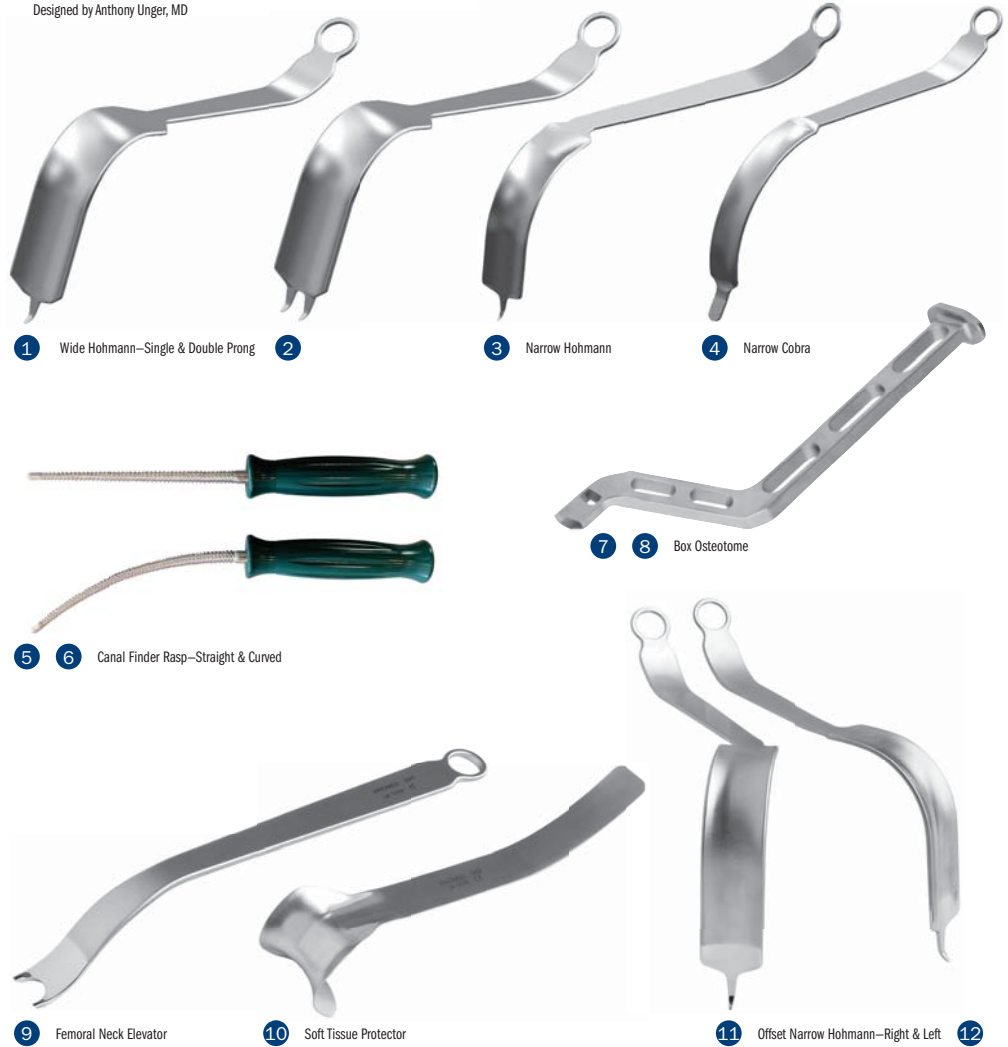
# Unger Anterior Total Hip Instruments

Universal instrument system specifically designed for Direct Anterior approach THR

Designed by Anthony Unger, MD

PRODUCT NO'S:	
1	3001 [Unger Wide Hohmann—Single Prong] Blade Width: 44mm Blade Depth: 5" Overall Length: 13.5"
2	3008 [Unger Wide Hohmann—Double Prong] Blade Width: 44mm Blade Depth: 5" Overall Length: 13.5"
3	3002 [Unger Narrow Hohmann] Blade Width: 34mm Blade Depth: 4" Overall Length: 13"
4	3003 [Unger Blunt Narrow Cobra] Blade Width: 34mm Blade Width at Tip: 12mm Blade Depth: 5.25" Overall Length: 14.5"
5	3004 [Unger Canal Finder Rasp—Straight] Overall Length: 11" Handle Length: 5"
6	3004-01 [Unger Canal Finder Rasp—Curved] Overall Length: 11" Handle Length: 5"
7	3005-R [Unger Box Osteotome—Right] Overall Length: 12"
8	3005-L [Unger Box Osteotome—Left] Overall Length: 12"
9	3006 [Unger Femoral Neck Elevator] Blade Width at Widest: 25mm Overall Length: 13" Handle Length: 9"
10	3007 [Unger Soft Tissue Protector] Blade Width: 50mm Blade Depth: 1.75" Overall Length: 10.125"
11	3009-R [Unger Offset Narrow Hohmann—Right] Blade Width: 34mm Blade Depth: 4" Overall Length: 13"
12	3009-L [Unger Offset Narrow Hohmann—Left] Blade Width: 34mm Blade Depth: 4" Overall Length: 13"

MADE IN USA



Instruments also commonly used with this approach:

## Hannum Tissue Grasper

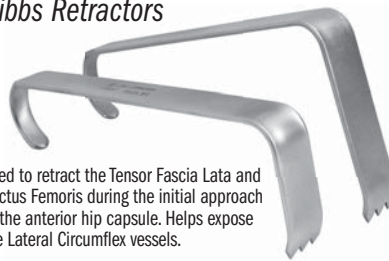
Used for dissection (to preserve)/or removal of the anterior capsule, removal of the labrum, or other soft tissue around the acetabulum prior to cup implantation. Also used to release the capsule to expose the femur for placement of the femoral stem. Long, low profile helps facilitate working through a small incision without disrupting vision.



**PRODUCT NO:**  
1775-03 [Long Jaw]  
3mm Jaw Width  
Overall Length: 9.25"

## Hibbs Retractors

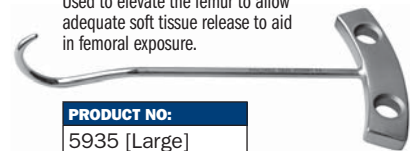
Used to retract the Tensor Fascia Lata and Rectus Femoris during the initial approach to the anterior hip capsule. Helps expose the Lateral Circumflex vessels.



**PRODUCT NO'S:**

6235 [Medium] Overall Length: 10.75" Handle Length: 9.75" Blade Depth: 4.5" Blade Width: 25mm	6240 [Standard] Overall Length: 8.75" Handle Length: 8" Blade Depth: 3" Blade Width: 25mm
---	---

Used to elevate the femur to allow adequate soft tissue release to aid in femoral exposure.



**PRODUCT NO:**  
5935 [Large]  
Curve Diameter: 55mm  
Overall length: 10"

Designed by Adolph V. Lombardi, MD

## Femoral Head Removal Pin

**PRODUCT NO:**  
1310 [Pin]  
Overall Length: 9"  
Diameter: 4mm (5/32")

Partial threaded pin used to help remove a femoral head.

ISO 9001:2008 • ISO 13485:2003

FREE TRIAL ON MOST INSTRUMENTS

Scan to Launch Our Website



# INNOMED

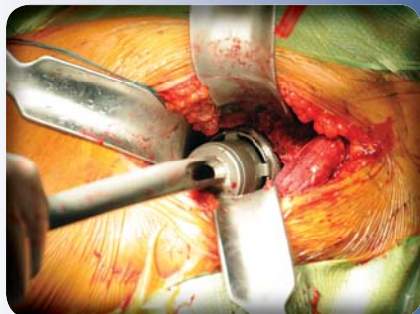


103 Estus Drive, Savannah, GA 31404  
www.innomed.net info@innomed.net

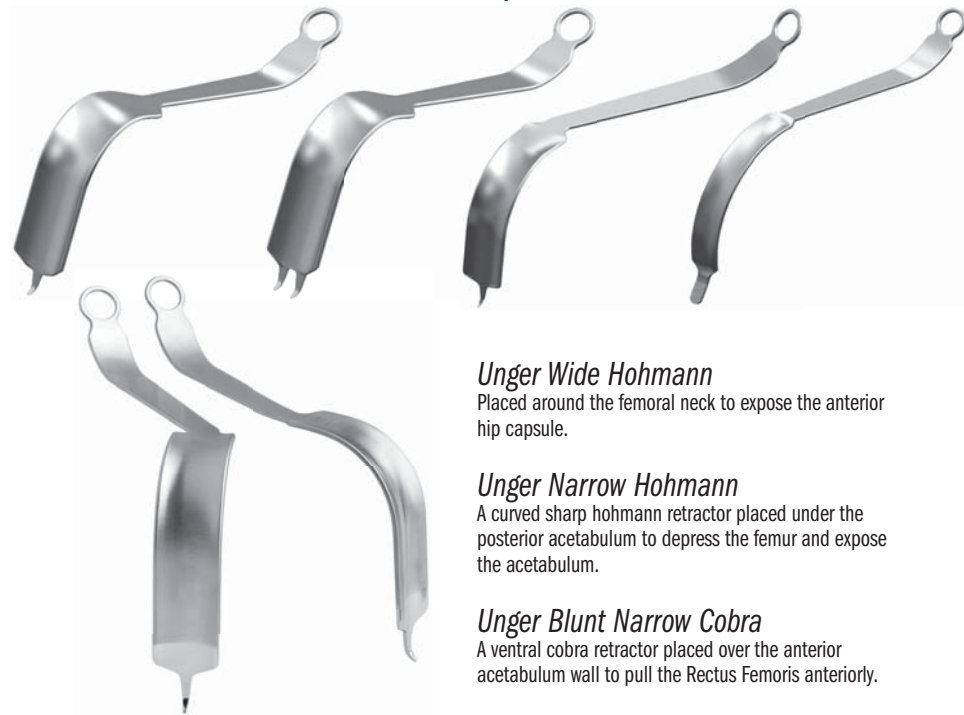
912.236.0000 Phone  
912.236.7766 Fax

Innomed-Europe Tel. +41 41 740 67 74  
Fax +41 41 740 67 71

1.800.548.2362



## Femoral Head and Acetabular Exposure



### *Unger Wide Hohmann*

Placed around the femoral neck to expose the anterior hip capsule.

### *Unger Narrow Hohmann*

A curved sharp hohmann retractor placed under the posterior acetabulum to depress the femur and expose the acetabulum.

### *Unger Blunt Narrow Cobra*

A ventral cobra retractor placed over the anterior acetabulum wall to pull the Rectus Femoris anteriorly.

## Femoral Neck Exposure



### *Unger Wide Hohmann*

Placed medial to the femoral neck to push the femur laterally, helping to expose the femur for implant broaching and insertion.

### *Unger Femoral Neck Elevator*

A femur elevator designed to interact with the Unger Anterior Fulcrum to expose the femur. Placed behind the Greater Trochanter.

### *Unger Soft Tissue Protector*

A unique device that protects the Tensor Fascia Lata and allows the femoral elevator to lever/push up the femur for femoral component broaching and placement.

ISO 9001:2008 • ISO 13485:2003

**FREE TRIAL ON MOST INSTRUMENTS**



103 Estus Drive, Savannah, GA 31404  
www.innomed.net info@innomed.net

912.236.0000 Phone  
912.236.7766 Fax

Scan to  
Launch Our  
Website



Innomed-Europe Tel. +41 41 740 67 74  
Fax +41 41 740 67 71

**INNOMED**

**1.800.548.2362**